

STRUCTURE TONE'S BLUEPRINT FOR SUSTAINABILITY

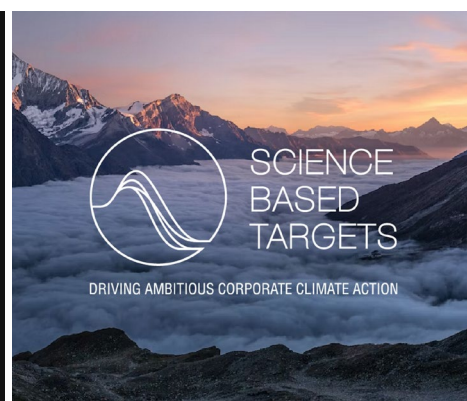
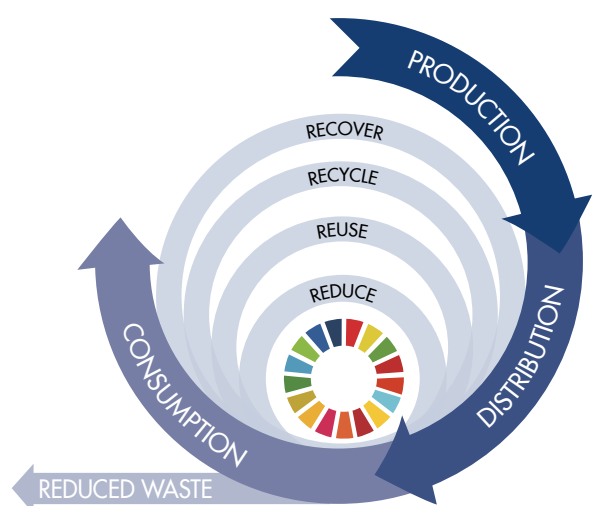
How Dublin is Cutting Carbon with Gypsum Recycling



Local Innovation & Engagement

Structure Tone Dublin is leading the charge in driving sustainability forward in the construction sector by focusing on collaboration and innovation in critical areas like waste diversion and supply chain engagement.

What sets us apart is our commitment to leveraging expertise and resources, including from our international offices. Ryan Hughes from our New York office joined Stephen Loughlin in Dublin where they met with Saint Gobain and Allied Recycling, two key players making significant efforts towards tackling climate change.



Near Term Carbon Commitments

As part of Structure Tone's commitment to the Science Based Targets initiative (SBTi), we're working to decarbonise our operations and engaging our suppliers to drive climate action.

WASTE SEGREGATION: The Key to Success

Dedicated plasterboard skips are standard on our projects.

Gypsum, a key material in plasterboard, is a major waste product from our construction sites.

Our recycling process starts on-site with clear waste segregation, using labelled waste skips to separate plasterboard and other recyclables from general waste.



This crucial first step keeps materials out of landfills and in proper recycling channels

Proper segregation helps in identifying and separating plasterboard from other waste materials, preventing contamination.

This ensures that plasterboard can be recycled efficiently, reducing the environmental impact and conserving resources.

Additionally, it helps in complying with regulations and promotes sustainable construction practices.



Our two-part journey began with a recent visit to Allied Recycling in Naas, Co. Kildare, where we discussed the complexities and possibilities are waste sorting and recycling.

ALLIED RECYCLING



Allied Recycling is a family-run business based between Clonmellon, Co. Westmeath and Naas, Co. Kildare, operating for over 20 years.

The facility specialises in handling pre-segregated plasterboard skips, meticulously checking them for contaminants.



Once enough off-cuts are collected, they are sent to Saint Gobain's facility in Kingscourt, the sole plasterboard manufacturer in Ireland, for processing.



Allied Recycling have a commitment to providing a service that seeks to incentivise waste prevention and to encourage the segregation of waste so that it can be managed in accordance with the waste hierarchy, whereby waste prevention, preparing for reuse, recycling and other recovery are preferred over the disposal of waste.



Allied Recycling transports approximately 25 tonnes of recycled plasterboard to Saint Gobain each week. This amount is equivalent to the weight of 10 adult elephants, symbolizing a significant move towards sustainability!

SAINT GOBAIN MANUFACTURING

The journey continued with an exclusive tour of the Saint Gobain manufacturing plant in Kingscourt, Co. Cavan. A large share of Ireland's market counts on Saint Gobain plasterboard. Thanks to their knack for slashing environmental impact and cutting down on global warming. This visit was crucial in deepening our understanding of our role in the circular economy and how we must manage this essential material stream to make it all possible.

The recycling process begins with plasterboard off-cuts being fed into a crusher that separates paper from gypsum.

EnviroGrind, a gypsum processor working on behalf of Saint Gobain, transforms plasterboard waste into valuable resources and manufacturing inputs.

The gypsum is then finely ground back into powder by a roller crusher and screened to remove plastics, metals, or other contaminants, making it ready for reuse.

This recycling process reduces the need for new gypsum mining, thereby safeguarding the natural environment. The paper collected during the recycling process is repurposed, with some used in a gypsum-based product for growing mushrooms, supporting the agricultural industry.



At their Kingscourt location, Saint Gobain revealed how recycled gypsum is reintegrated into new wallboard production, offering us a first-hand look at their cutting-edge recycling processes.

The recent visits to Allied Recycling and Saint Gobain's manufacturing plant in Ireland spotlighted how our efforts in both Dublin and New York are not just meeting our SBTi commitment -- we're setting a powerful example of how global collaboration can drive real, sustainable impact.

By partnering with facilities equipped with sorting technologies, plasterboard waste can be efficiently separated from other materials, ensuring that it remains suitable for recycling.

Structure Tone is setting a new standard for how the industry can harmonize with the environment.